

M2 MACQUARIE PARK MOTORSCAPES PROJECT

A new public artwork will transform an unused piece of land beside the Hills M2 Motorway at Macquarie Park. Kinetica, the winning entry from Transurban's Ideas Competition, will be a vibrant and abstract addition to the landscape in its representation of the life cycle of Australia's native flora. Designed to uplift and inspire, the artwork will be seen by over 100,000 motorists a day.

In addition to Kinetica, significant bush restoration work is planned for the 5 hectare site. With Lane Cove National Park located to the north of the site, Hills M2 Motorway together with Landcare Australia, will invest in the growth of native plants and improve the site's water quality.

This exciting new project will start in mid-2016. Although the site is not accessible to the public, Kinetica will be visible to motorists and neighbouring buildings in the Macquarie Park district. Once complete in mid-2017, the project will make a positive contribution to the visual landscape and the community.

In this community update, we will introduce you to Kinetica and why it was selected; you will meet the artists; and learn what you can expect to see as we develop the site in the coming months.

Kinetica



Artist's Impression

SELECTION PROCESS

Launched in October 2015, the brief for the M2 Macquarie Park Ideas Competition was to encourage and challenge designers, artists and the community to come up with an artistic solution to contribute to the site's restoration. The 'right' idea would need to be ecologically, socially and economically sustainable.

A number of high quality entries were submitted for consideration. A judging panel made up of representatives from the artistic community, the NSW Government Architect's Office, Macquarie University, Roads and Maritime Services and Transurban had the difficult task of assessing the entries against strict judging criteria.

On 10 December 2015, the winners were announced at an awards event at Macquarie University. Second place was jointly awarded to Interleaves for its depiction of the 'ubiquitous' gumtree and Solar Weave for its bold, curved circular structure.

It was Kinetica that took out first place. The artwork stood out for its strong artistic expression, sense of fun, use of recycled materials and its connection to the site.



Wilde Designs - a Sydney-based design team made up of graphic artists Justin Sayarath and Sarah Rodriguez - lived up to their name. They were awarded first place and \$20,000 in the M2 Macquarie Park Ideas Competition for their artistic tribute to native plant species with their design Kinetica.

The creative duo is pictured here with Transurban CEO Scott Charlton at the awards event.



Artist's Impression

ABOUT THE ARTWORK

Regeneration. Rebirth. Unique. Resilient. Colourful. Fun. Contemporary. Deconstructed. Reconstructed. Kinetic.

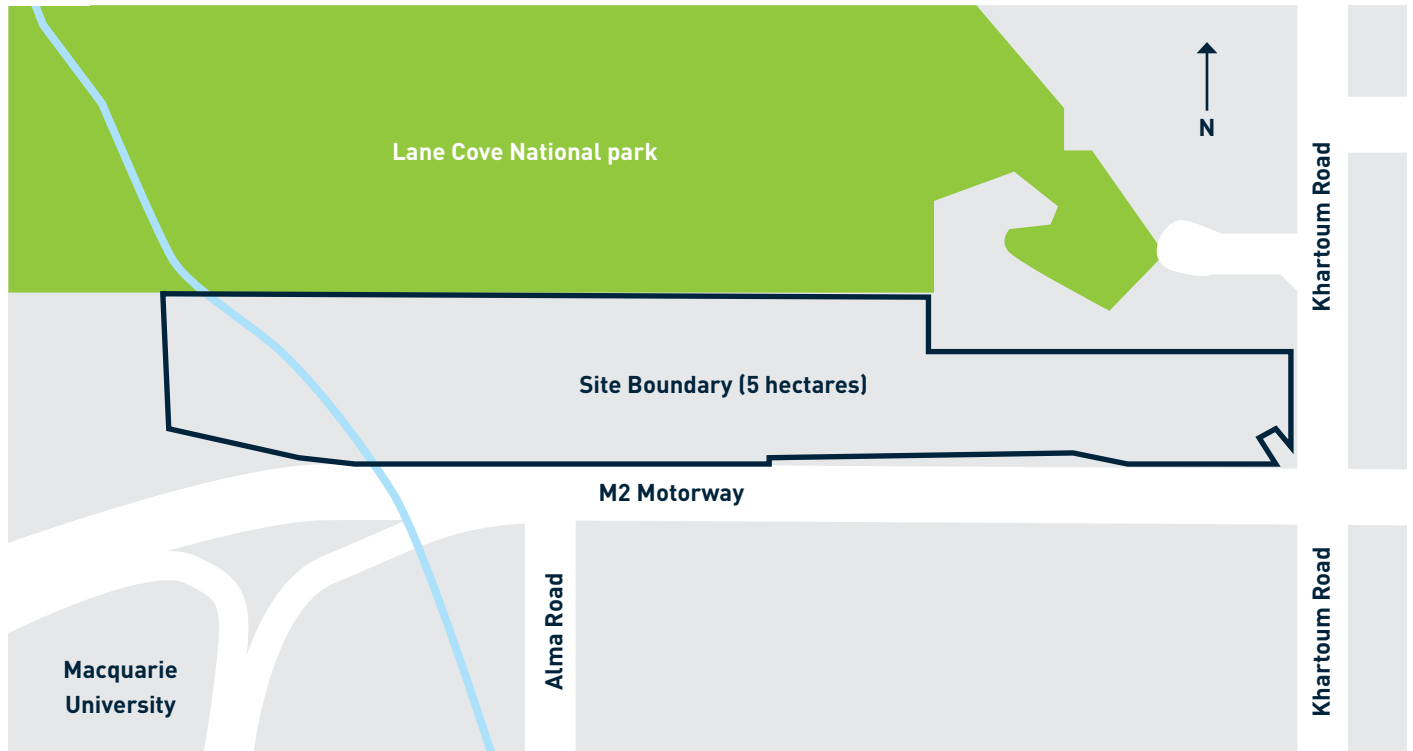
Kinetica is a playful interpretation of the life cycle and resilience of Australia's native flora. Many of Australia's native flora cannot exist without fire and is not only unique in appearance, but also in its ability to withstand extreme climates. This artwork explores this cycle in a contemporary way.

Banksia trees, golden wattles, the waratah and gum leaves are represented in abstract form and in bold shades of red, green, yellow and blue; a reflection of Australia's colourful landscape. Colourful eyes on the banksia tree support the idea of diversity and fun, with the gentle movement of the waratah reminding us that society is constantly on the move.

Constructed of mild steel, aluminium, recycled materials and solar power, these floral forms merge industry and nature, linking to the growth of the Macquarie Park area as well as promoting sustainable infrastructure.

The artwork will stand firm on the landscape, complementing the growth and restoration of the land and its native plant communities.

Site Location

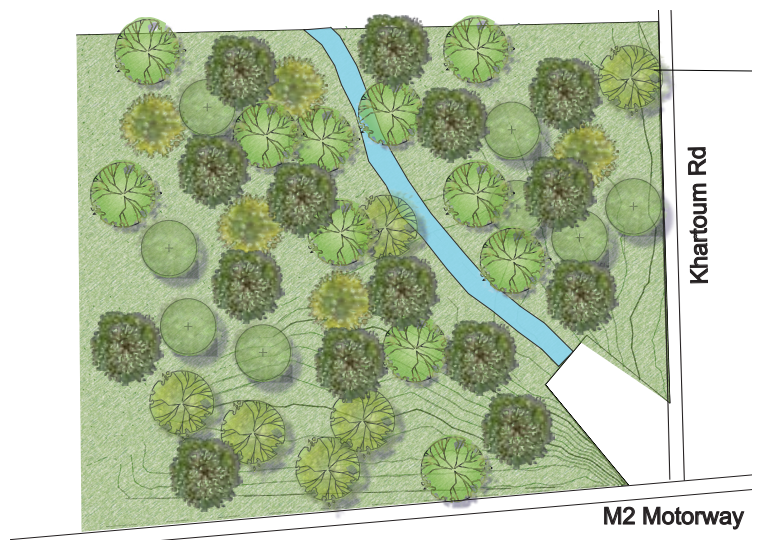
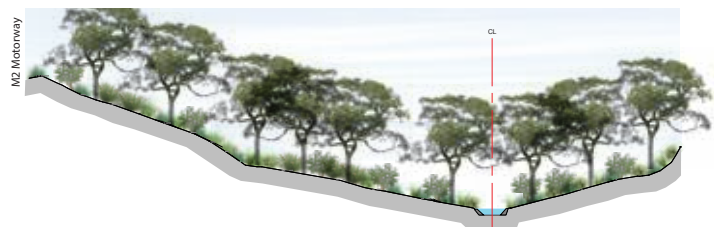


SITE RESTORATION

As part of Transurban's commitment to sustainability, investing in the restoration of the site will provide long term environmental benefits to the area. Previously used as a compound for the M2 Upgrade Project, the site currently has little ecological value. Neighbouring Lane Cove National Park to the north and with creeks to the east and west that flow into Lane Cove River, it is important an ecological buffer is created to ensure the preservation of the surrounding environment.

The work by Hills M2 Motorway and Landcare Australia will focus on creating healthy functioning eco-systems by removing noxious weeds and revegetating with local native, low maintenance plants including eucalypt species, various shrubs and grasses. In addition, special attention will be given to improving the quality of water flow into Lane Cove River through creek improvements and drainage works.

This project will improve the ecology of the site with ongoing maintenance of the revegetation work to continue for two years after the completion of the project.



CONSTRUCTION ACTIVITIES

Subject to planning approvals, the first phase of the project is the bush rehabilitation work and is scheduled to start mid-2016. This work is expected to be completed by mid-2017 and will involve site establishment, weed clearing, creek improvements and revegetation of local native plants. Ongoing maintenance and monitoring of the site will continue from project completion through to mid-2019.

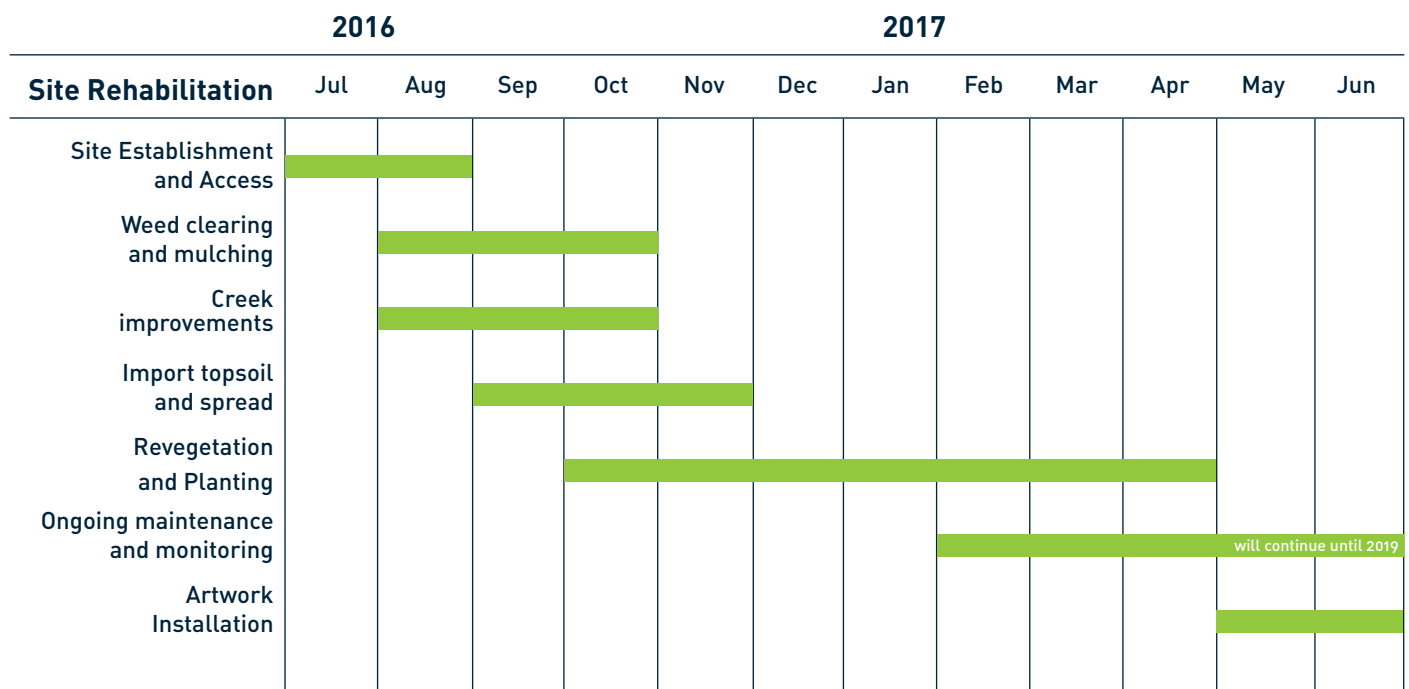
In addition, the artwork Kinetica, will be fabricated off site, with a scheduled installation planned for mid-2017.

Measures have been put in place to manage the disruption of construction work for surrounding residents and local businesses. Whilst all efforts will be made to ensure standard construction hours are adhered to between Mondays and Fridays, some night works will be required. Noise and dust control methods will be used to ensure the impact of works is minimised.

Surrounding residents, landowners and local businesses will receive further updates as work on the site progresses. We apologise in advance for any disruption caused throughout the project.

DRAFT – SUBJECT TO PLANNING APPROVALS

Timing of Construction Activities



MORE INFORMATION

To learn more about Transurban's sustainability strategy visit our website at www.transurban.com/sustainability

If you have any questions about the M2 Macquarie Park Motorscapes Project or concerns during construction, please contact Transurban at m2motorscapesproject@transurban.com

transurban

M2
Hills