

Notification

WURUNDJERI WAY EXTENSION
DECEMBER 2023



Heavy vehicle detour requirements

Wurundjeri Way closure – January to March 2024

Wurundjeri Way between Dudley Street and Bourke Street will be closed in both directions from the **night of 12 January 2024 to early-March 2024**.

Transurban—CityLink's operator—has temporarily changed restrictions on the Bolte Bridge for heavy vehicles during this closure.

When using the Bolte Bridge as a detour, freight operators are reminded to use the heavy load platform (HLP) route.

There will additionally be a single night full closure of Wurundjeri Way between Dudley Street and Bourke Street overnight on **Thursday 11 January 2024, 8pm to 5am** to setup the long-term closure.

Heavy vehicles will be able to access the detour route via Harbour Esplanade and Bourke Street on 11 January.

Performance based standards (PBS) vehicles weighing 68.5 to 85.5 tonnes

These vehicles will be temporarily allowed to use the Bolte Bridge with lane restrictions, if the operator:

- Is travelling under the National Class 2 PBS Notice, or has as an active PBS permit issued by the National Heavy Vehicle Regulator (NHVR) that refers to the Department of Transport and Planning (DTP) heavy vehicle maps on the VicRoads website; or obtains a pre-approved PBS permit issued by the NHVR.
- Complies with the changed conditions on the Bolte Bridge as described on DTP's heavy vehicle maps.
- Travels in the left-most lane.

Please note: no route is available over the West Gate Freeway overpass that connects with the Bolte Bridge due to weight limits.

PBS vehicles and Super B-Doubles weighing 85.5 to 117 tonnes

These vehicles will be temporarily allowed to use the Bolte Bridge with lane and travel time restrictions:

- For PBS combinations:
 - The operator is travelling under the National Class 2 PBS Notice,
 - or has an active PBS permit issued by the NHVR that refers to the DTP heavy vehicle maps on the VicRoads website,
 - or obtains a pre-approved PBS permit issued by the NHVR.
- For Super B-Doubles:
 - The operator refers to amended permit(s), which will describe the specific route that must be followed.
- Travel along the heavy load platform (HLP) route. See attached information sheet for details.
- Travel **between 10:30pm and 4:30am, Monday to Thursday**, and **between 11:30pm and 4:30am, Friday to Sunday**.

Please note: if vehicles need to travel outside of approved hours, follow the regular NHVR permit process. There is no route available over the West Gate Freeway overpass to the Bolte Bridge due to weight limits.

Sign up for updates at westgatetunnelproject.vic.gov.au

In partnership with
Transurban

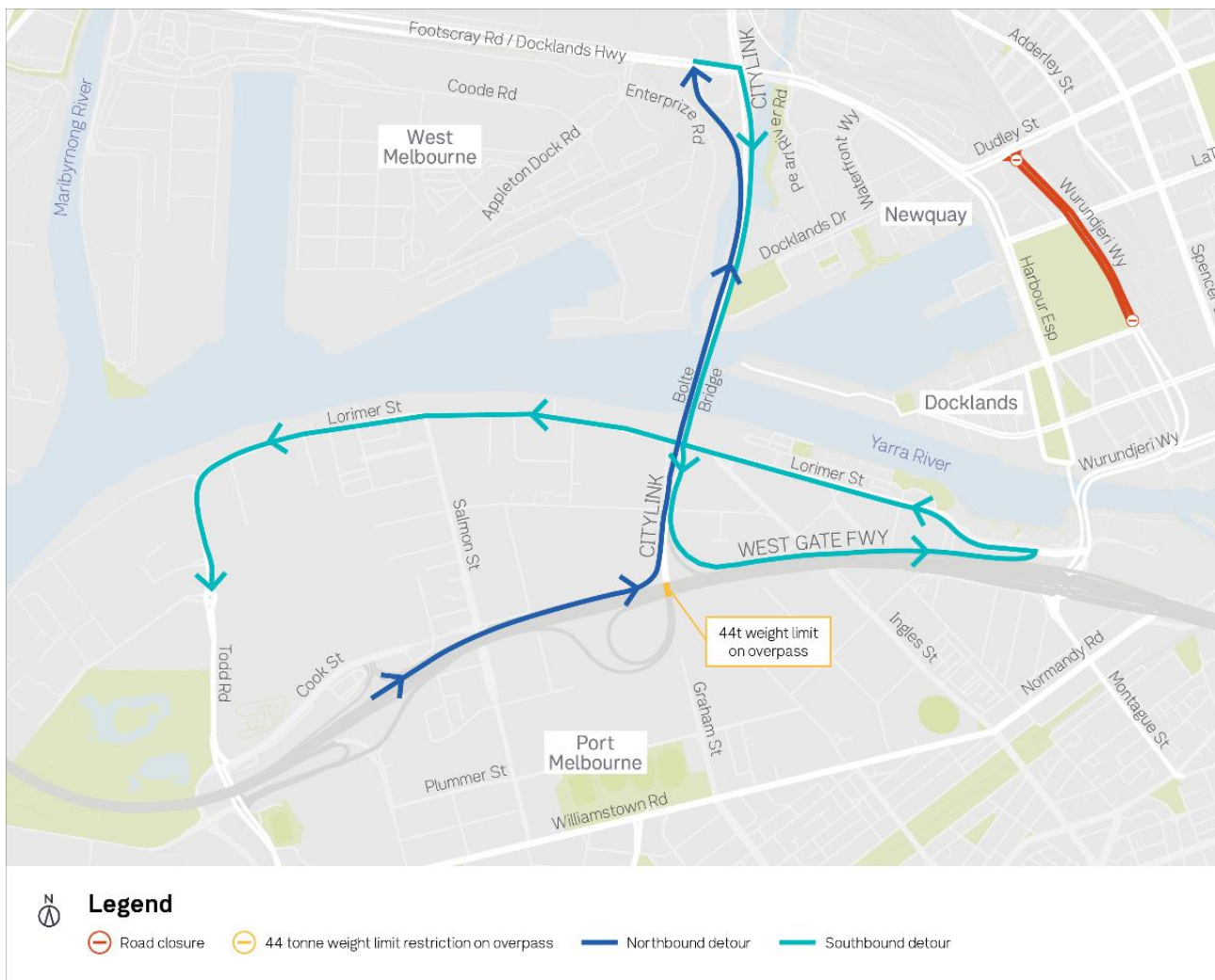


Oversize and over mass (OSOM) vehicles

These vehicles will be temporarily allowed to use the Bolte Bridge with a permit:

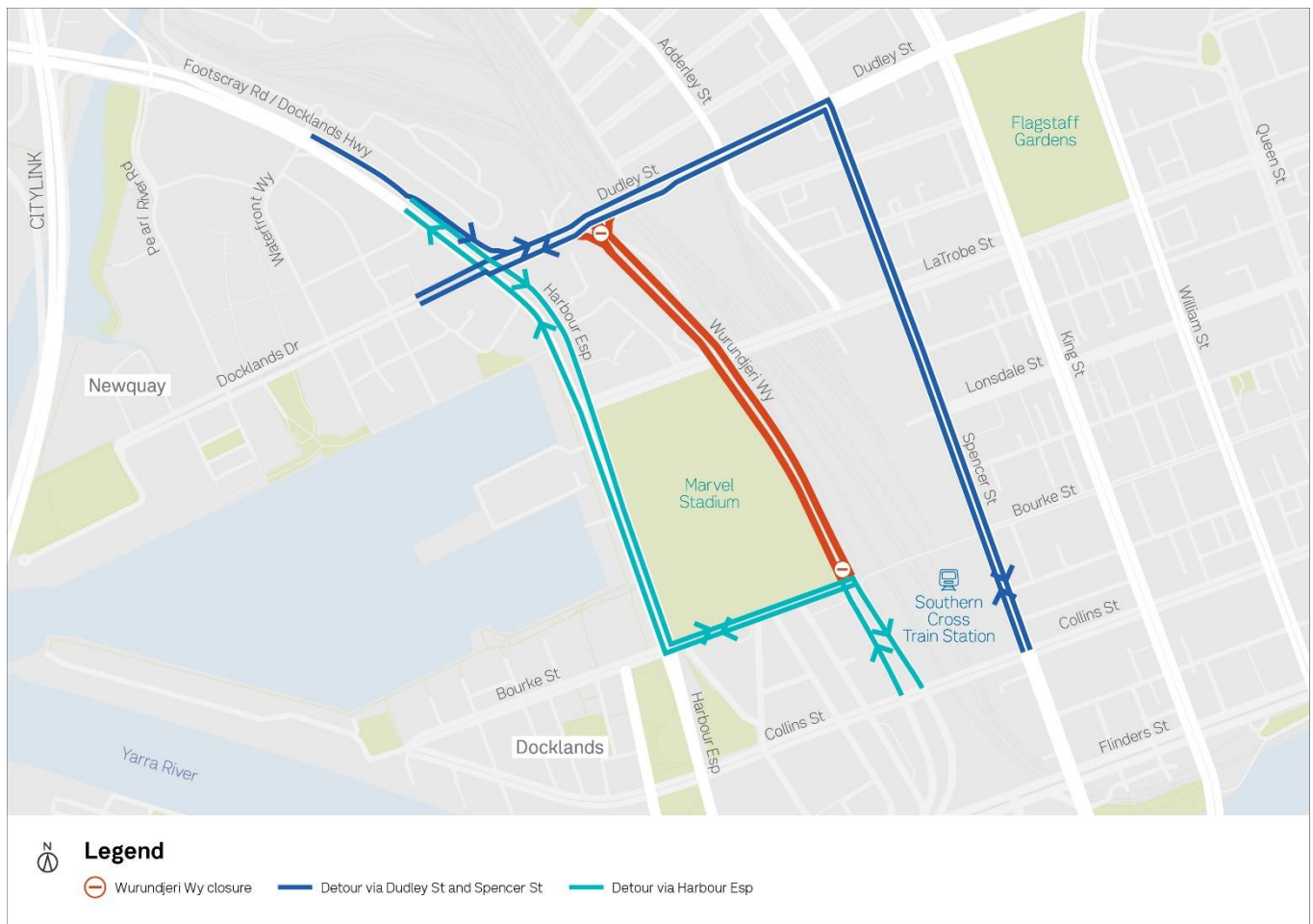
- Follow the regular NHVR permit process.
- DTP and Transurban will work with NHVR to assess each permit application.
- Conditions (e.g., time of travel and lane use requirements) may apply, which will be outlined in the permit issued via NHVR.
- The permit process will enable Transurban, DTP and NHVR to consider the use of Bolte Bridge during the daytime as requested by operators.

Detour route map – Long term closure of Wurundjeri Way



Sign up for updates at westgatetunnelproject.vic.gov.au

Detour route map – closure of Wurundjeri Way on night of 11 January 2024



This information may be subject to change

This work may be subject to approvals and permits and may change due to site and weather conditions.

Remember there may be other disruptions to traffic during this time. For the latest information and to plan ahead, visit bigbuild.vic.gov.au/disruptions

Thank you

Thanks for your ongoing patience and understanding while we carry out this critical work for West Gate Tunnel Project.

If you have questions about this work, please call us on **1800 105 105** and ask for the 'East Zone'.

Please pass this update on to anyone else who might find the information useful.

westgatetunnelproject.vic.gov.au

info@wgta.vic.gov.au



For languages other than English please call 9209 0147

1800 105 105 (call anytime)     

Please contact us if you would like this information in an accessible format. If you need assistance due to a hearing or speech impairment, visit relayservice.gov.au



Route Description for PBS & Super B Double 68.5t – 85.5t Heavy Vehicles – Bolte Bridge Travel

Use of Bolte Bridge during WGTP works on Wurundjeri Way

Who can travel on the Bolte Bridge?

The Bolte Bridge is available to Performance Based Standards (PBS) & Super B-Double vehicles operating between 68.5t – 85.5t, whilst West Gate Tunnel Project (WGTP) works on Wurundjeri Way are being completed. PBS vehicles within this bracket that are conditionally approved for travel across the Bolte Bridge have had their respective Department of Transport & Planning (DTP) [Heavy Vehicle Maps](#) updated for their class.

Please check to confirm the configuration you're using is 'Conditionally Approved' for travel & familiarise yourself with the conditions that are applicable for travel whilst on the Bolte Bridge & respective ramps. Super B-Doubles will have their permits updated. **No ramps outside of the conditionally approved ramps are to be used.**

If you're operating a PBS vehicle or Super B-Double between 85.5 – 117t, please see the 'HLP Route Description for PBS & Super B-Double 85.5t - 117t Heavy Vehicles – Bolte Bridge Travel' document.

Please note: the West Gate Freeway overpass that connects with the Bolte Bridge (known as the Graham Street Bridge) will be temporarily restricted to a vehicle weight limit of 44 tonnes for safety reasons while Transurban strengthens the overpass.

What time can travel across the Bolte Bridge occur?

With the conditional approval, no time restriction is applied.

How do I safely travel across the Bolte Bridge?

To safely travel across the Bolte Bridge, lane restrictions have been put in place for heavy vehicles operating between 68.5 - 85.5t. **When travelling across the Bolte Bridge, both Northbound & Southbound, drivers are required to stay in the left most lane available to them.**

Where do I enter and exit the Bolte Bridge from?

The DTP Heavy Vehicle Maps have been updated to clearly indicate which conditionally approved ramps are to be used. Please familiarize yourself with the conditions that are applicable for travel on the Bolte Bridge & respective ramps. Simply, vehicles headed Northbound are to enter the Bolte Bridge from the Eastbound West Gate Freeway ramp and are to exit at Footscray Road. Vehicles headed Southbound are to enter at Footscray Road Inbound Entry and must exit towards Exit 2A, Lorimer St.

How long is this conditional approval in place?

The DTP Heavy Vehicle Maps & Super B-Double permits have been altered to conditionally approve travel across the Bolte Bridge whilst WGTP works along Wurundjeri Way are being completed. Once Wurundjeri Way works are complete, the maps will be returned to 'restricted' travel across the Bolte Bridge & permits will be altered again.

For more information, please contact:

phone 13 33 31

email westgatetunnel@transurban.com

website transurban.com

HLP Route Description for PBS & Super B Double 85.5t – 117t Heavy Vehicles – Bolte Bridge Travel

Use of Bolte Bridge during WGTP Works on Wurundjeri Way

What are HLP lanes / what is the HLP route?

The Heavy Load Platform (HLP) lanes are lanes that have been strengthened to have an additional load carrying capacity to facilitate the transport of heavy vehicles. These lanes are strengthened to carry a design vehicle load of up to 400t.

The HLP route is derived from the positioning of the HLP lanes and is attached to this document in the below appendix items.

Who should use the HLP route?

The HLP Route is to be utilised by Performance Based Standards (PBS) & Super B-Double vehicles operating between 85.5t – 117t, whilst travelling across the Bolte Bridge. PBS vehicles within this bracket that are conditionally approved for travel across the Bolte Bridge have had their respective Department of Transport & Planning (DTP) [Heavy Vehicle Maps](#) updated for their class.

Please check to confirm the configuration you're using is '*Conditionally Approved*' for travel & familiarise yourself with the conditions that are applicable for travel whilst on the Bolte Bridge & respective ramps.

Super B-Doubles have had their permits updated.

No ramps outside of the conditionally approved ramps are to be used and the HLP Route must be followed whilst travelling across the Bolte Bridge and along ramps.

What time can travel across the Bolte Bridge occur?

With the conditional approval, a time restriction of 10:30pm and 4:30am, Monday to Thursday, and between 11:30pm and 4:30am, Friday to Sunday, is applied.

How do I follow the HLP route?

To successfully follow the HLP route, please see **Appendix A. HLP Route Written Description & Appendix B. Visual HLP Route Description.**

How long is this conditional approval in place?

The DTP Heavy Vehicle Maps & Super B-Double permits have been altered to conditionally approve travel across the Bolte Bridge whilst West Gate Tunnel Project (WGTP) works along Wurundjeri Way are being completed.

Once Wurundjeri Way works are complete, the maps will be returned to '*restricted*' travel across the Bolte Bridge. Super B-Double permits will also be altered accordingly.

For more information, please contact:

phone 13 33 31

email westgatetunnel@transurban.com

website transurban.com

Appendix A. HLP Route Written Description

Bolte Bridge Lane Restriction Northbound

- From the southernmost abutment or expansion joint, travel in the centreline of the structure (see Figure 1).
- Across the Bolte Bridge, travel in the centreline of the structure, stay within **lane 2** from the left (see Figure 2).
- When exiting at Footscray Rd, prior to the chevron line marking and prior to the gantry, safely move to the centreline of the ramp (see Figure 3).
- Along the Footscray Rd exit ramp, travel in the centreline of the ramp until the last expansion joint (see Figure 4).

Bolte Bridge Lane Restriction Southbound

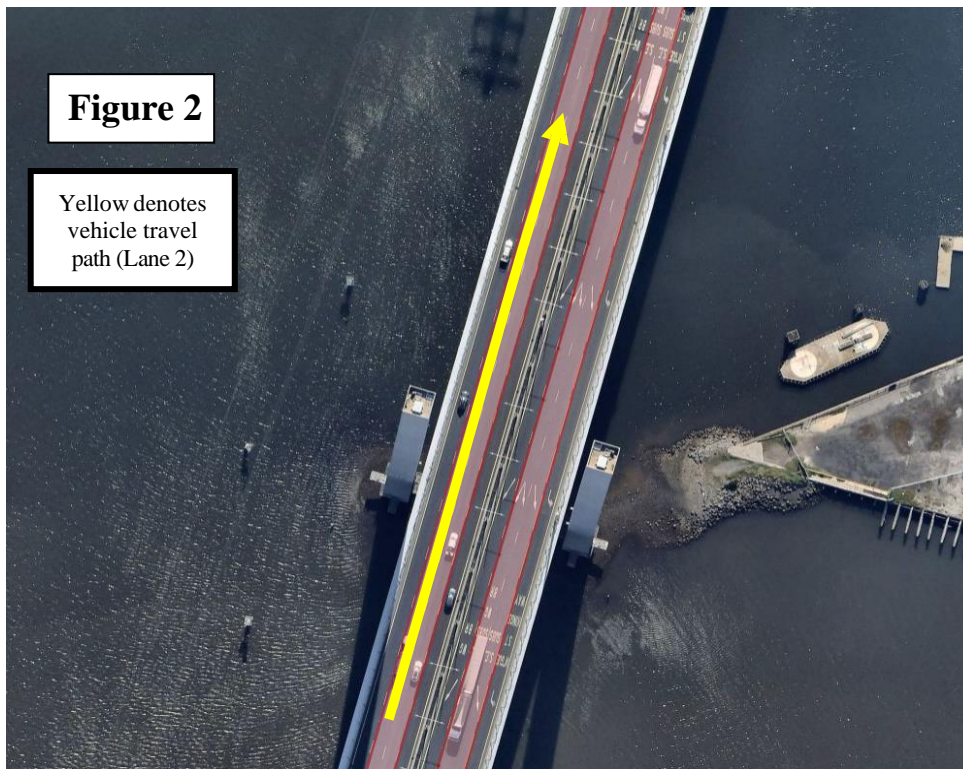
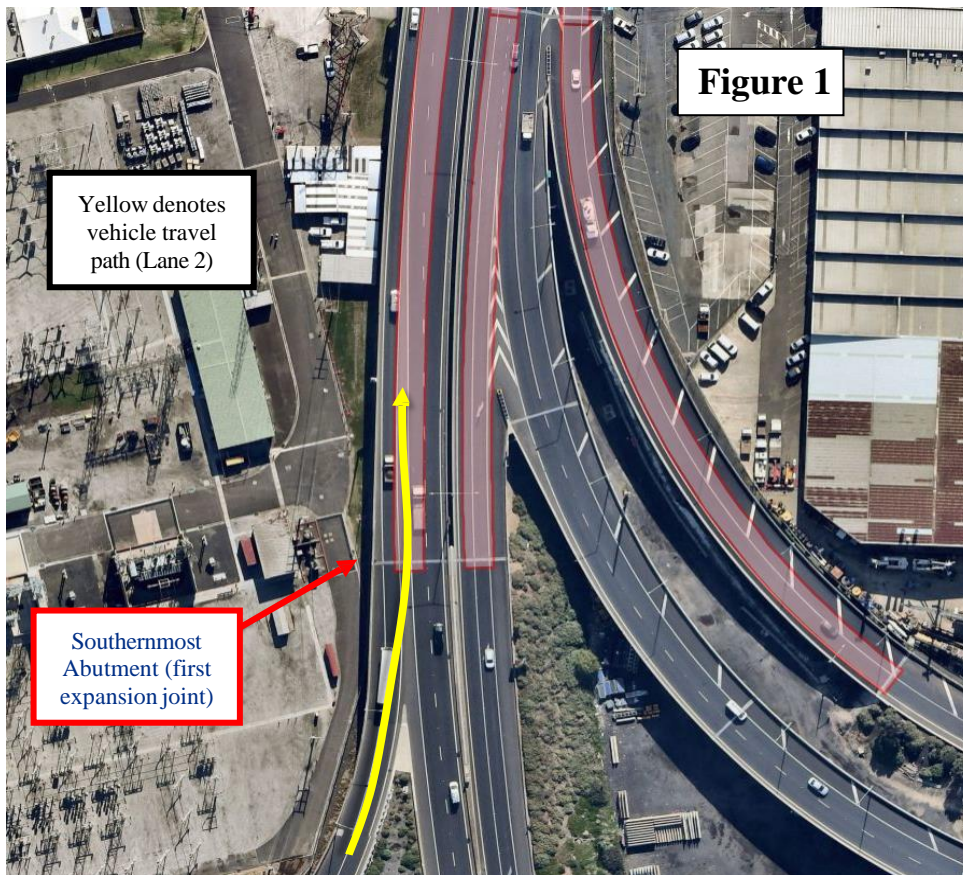
- Along the Footscray Rd entry ramp, travel in the centreline of the ramp at all times and merge across dotted lines (see Figure 5)
- Across the Bolte Bridge, travel in the centreline of the structure, stay within **lane 2** from the left (see Figure 6).
- When exiting to Lorimer St, merge left in advance of the sign gantry noting Convention Centre and truck tip over advisory signs above Turner St (see Figure 7 and 8).
- Along the Lorimer St exit ramp, travel in the centreline of the ramp (i.e. on the inside of the chevrons) until passing the southernmost expansion joint (see Figure 9).

Bolte Bridge Speed Restriction (Northbound & Southbound)

- When travelling on the Bolte Bridge, travel at **no greater than 40km/h**.

Appendix B. Visual HLP Route Description

Northbound Travel

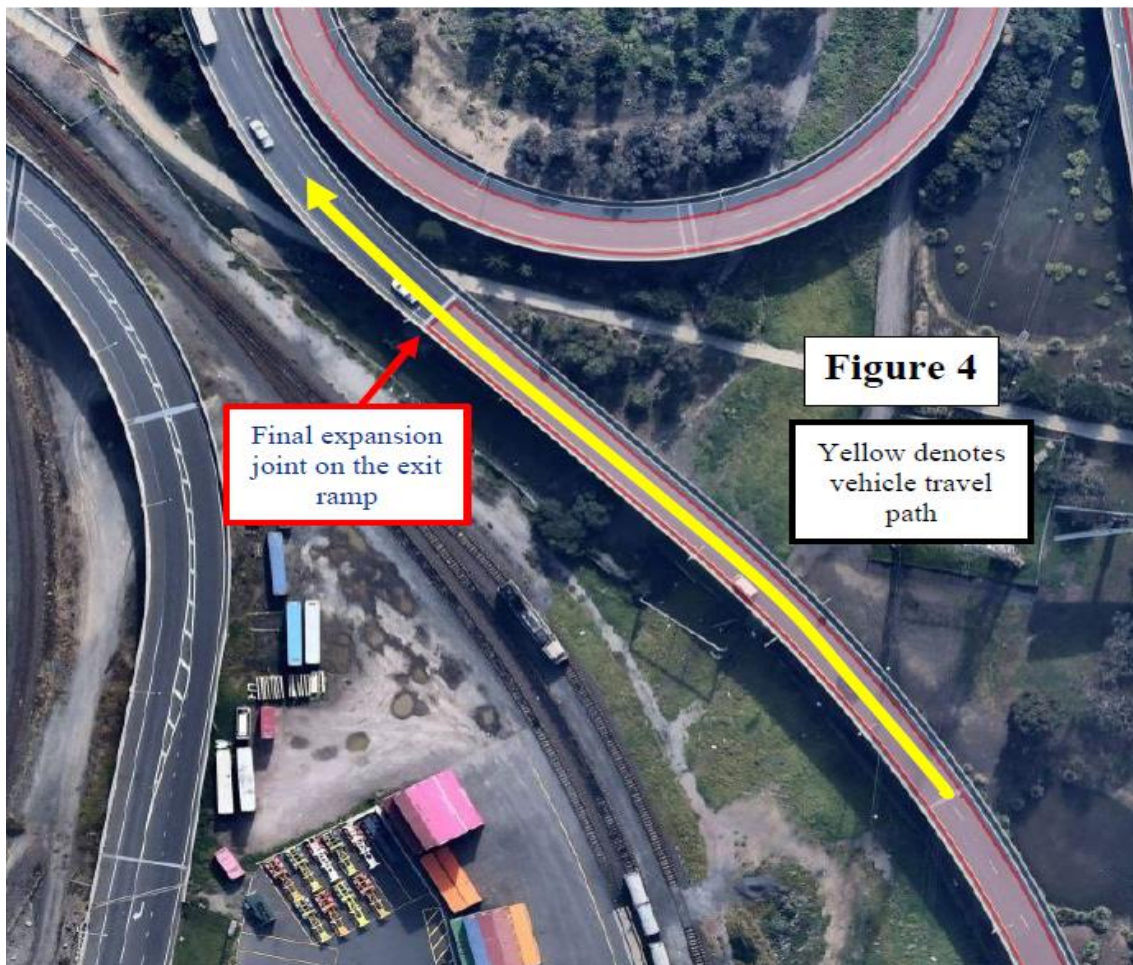
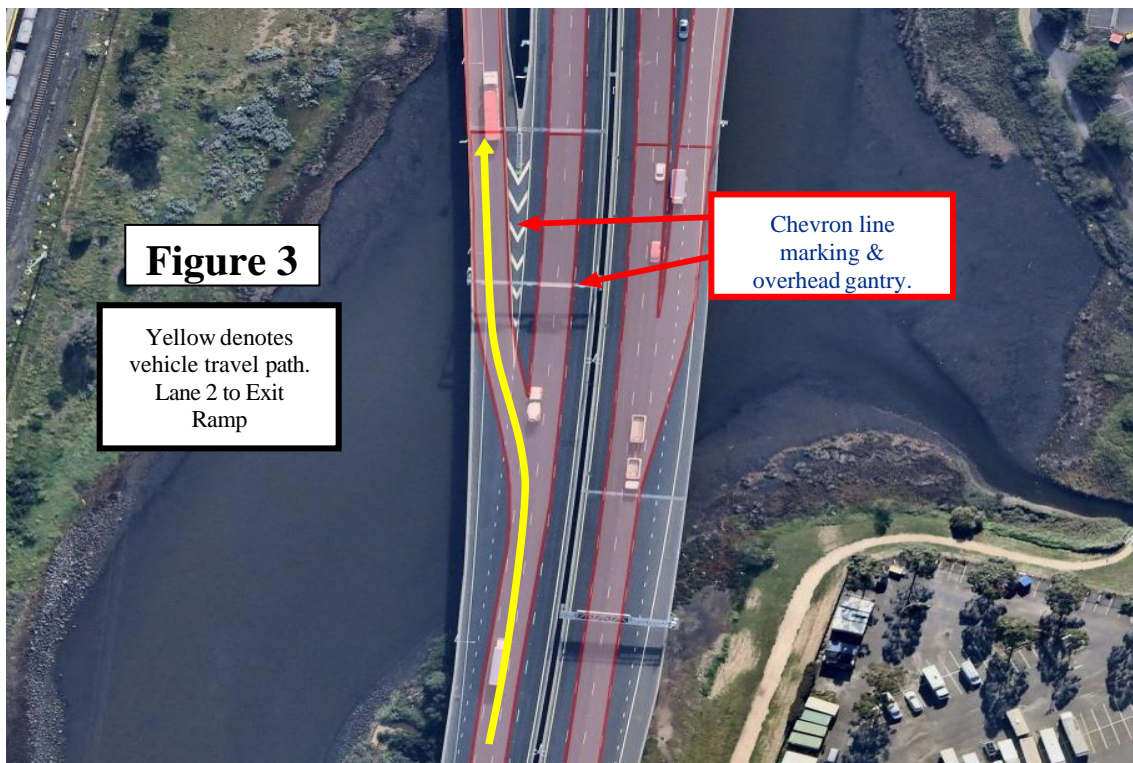


For more information, please contact:

phone 13 33 31

website transurban.com

email westgatetunnel@transurban.com



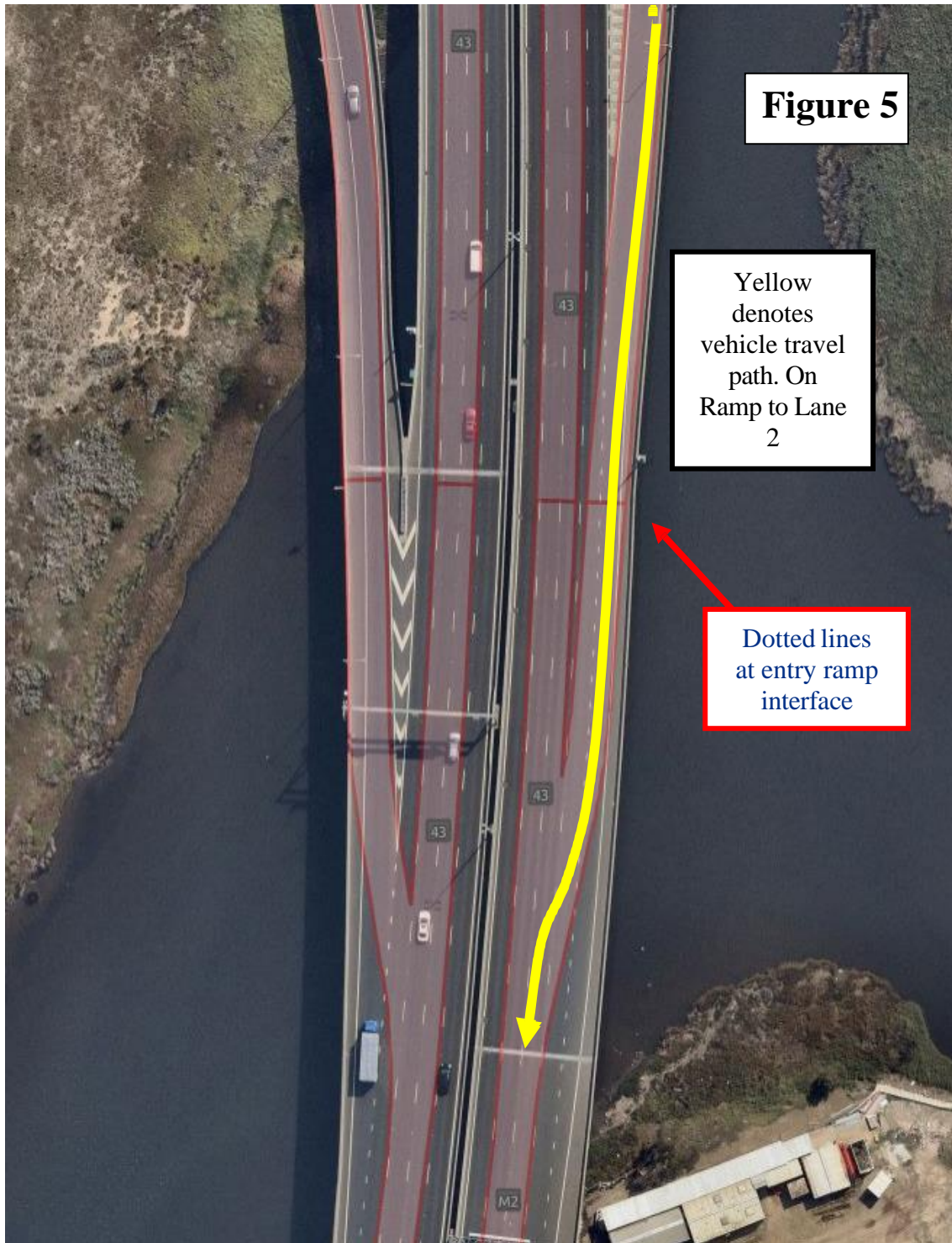
For more information, please contact:

phone 13 33 31

email westgatetunnel@transurban.com

website transurban.com

Southbound Travel

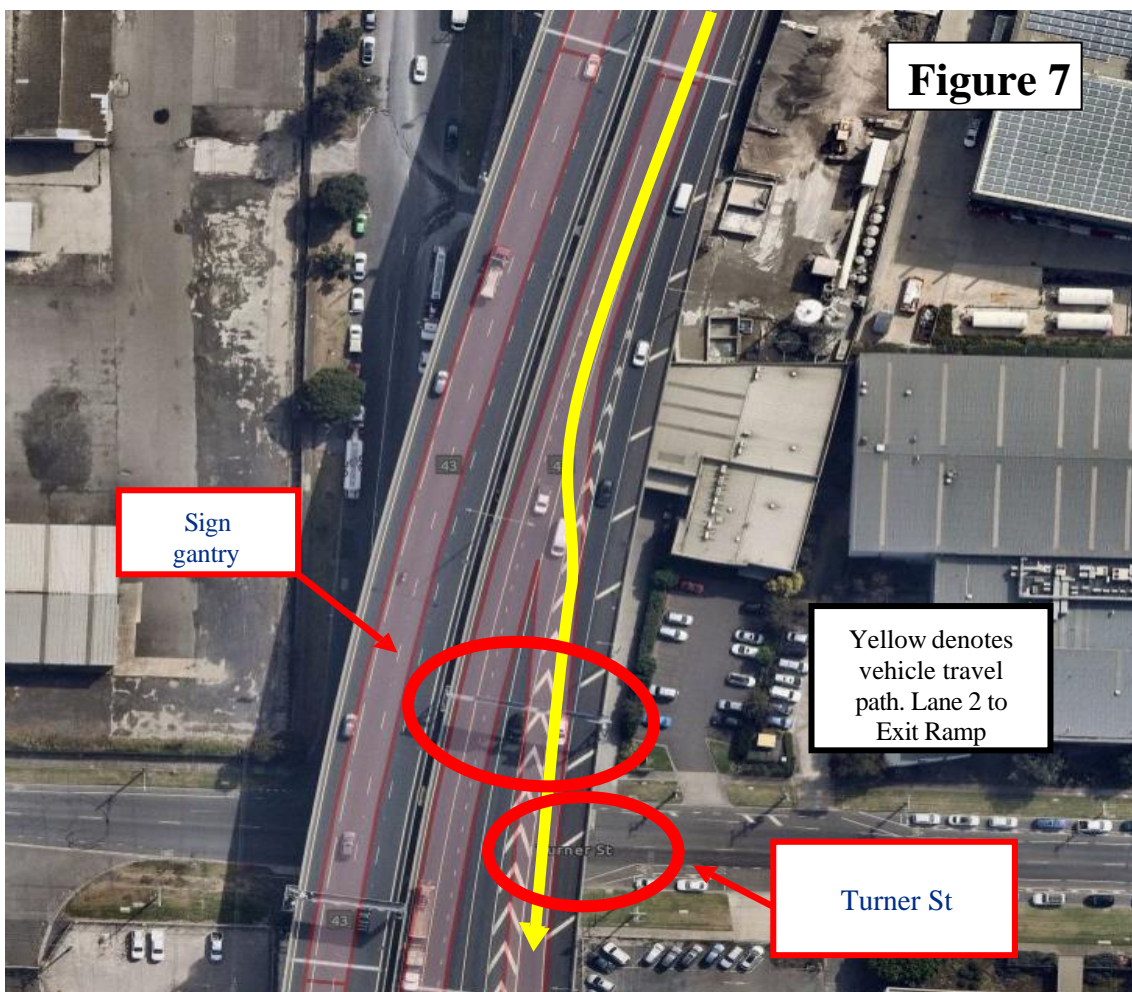
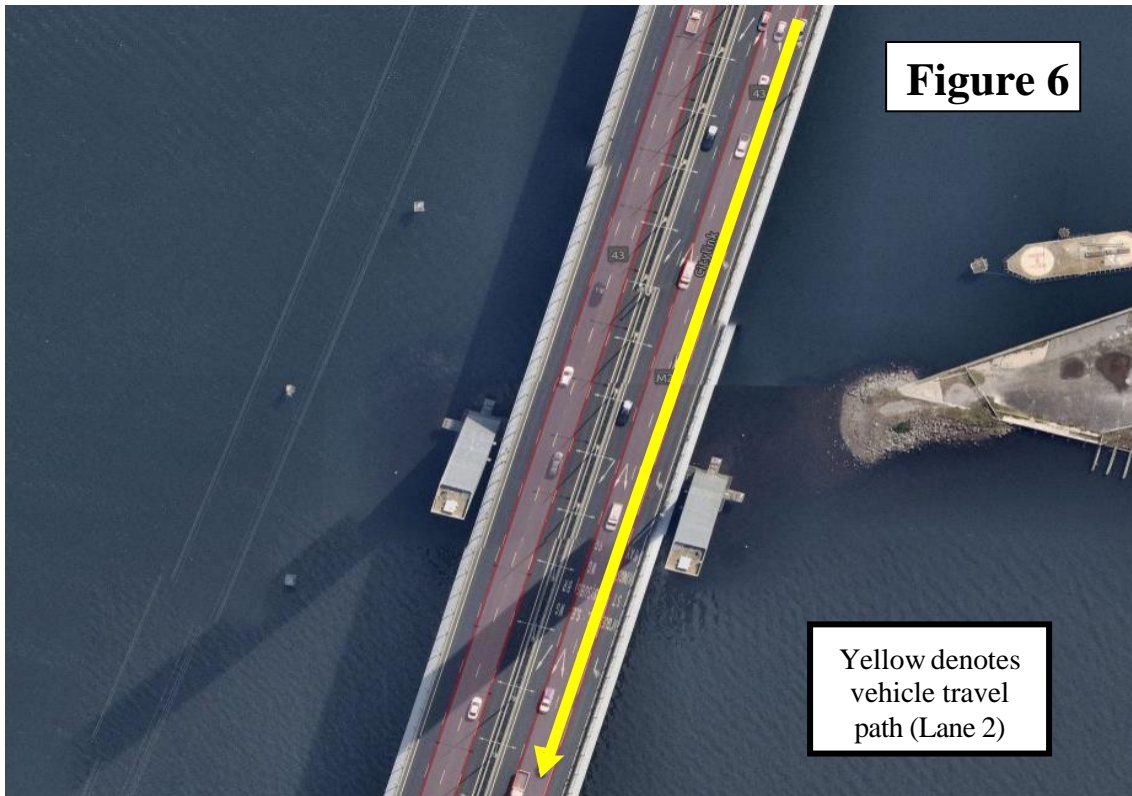


For more information, please contact:

phone 13 33 31

website transurban.com

email westgatetunnel@transurban.com

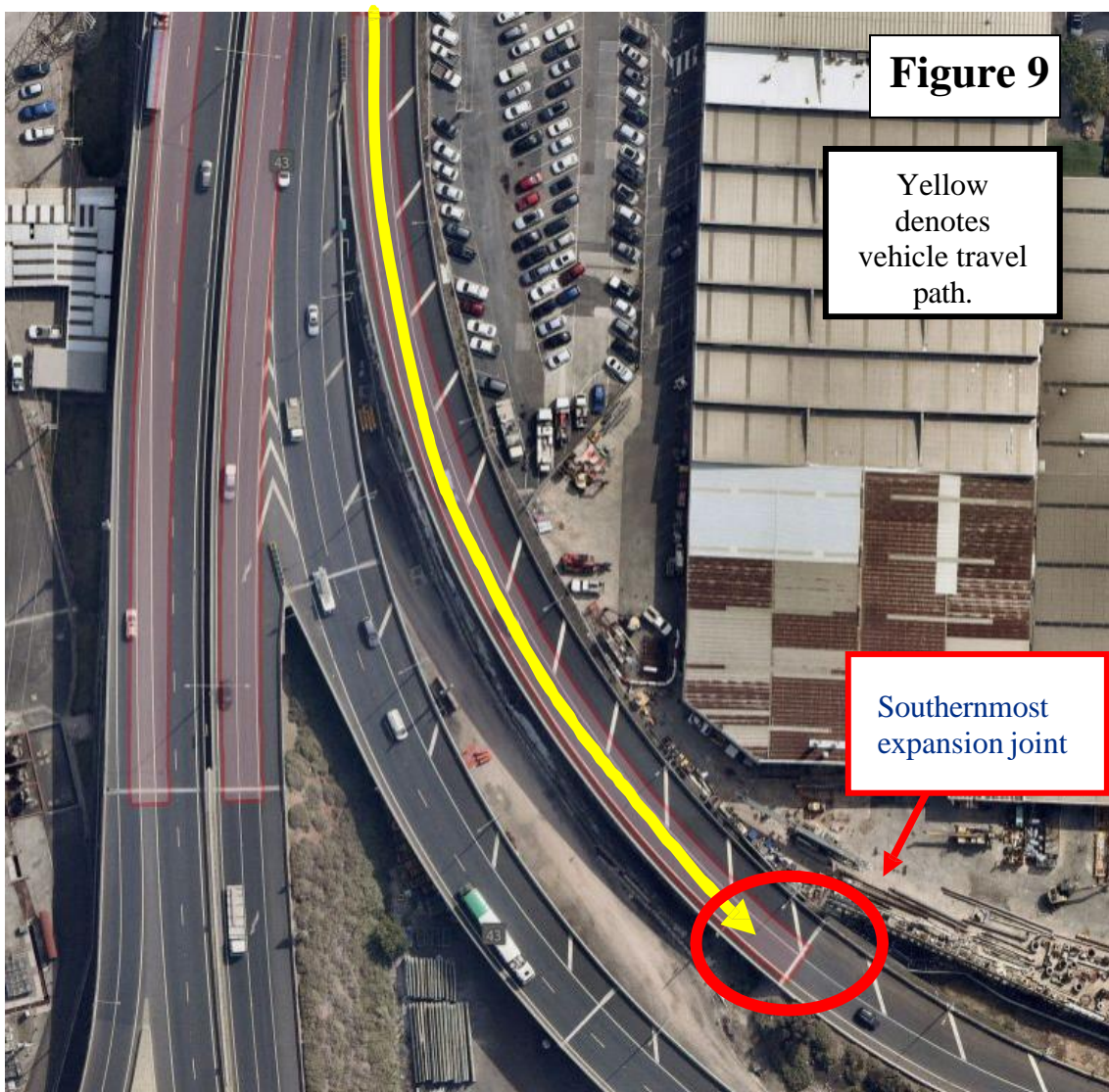


For more information, please contact:

phone 13 33 31

website transurban.com

email westgatetunnel@transurban.com



For more information, please contact:

phone 13 33 31

website transurban.com

email westgatetunnel@transurban.com